



GAT MONTHLY MEMBERSHIP PROGRESS REPORT

Results as of: 4/30/2023

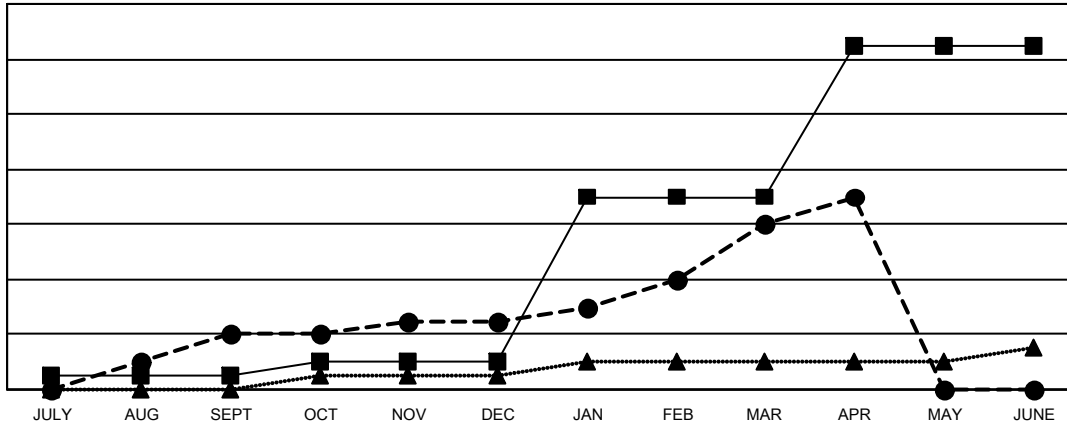
Multiple District 201

LOCATION: AUSTRALIA

Clubs			
RESULTS FOR 2022-2023			
QUARTER	NEW CLUB GOAL	NEW CLUBS	DROPPED CLUBS
JULY/AUG/SEPT	1	4	7
OCT/NOV/DEC	1	1	7
JAN/FEB/MAR	12	7	0
APR/MAY/JUNE	11	2	0

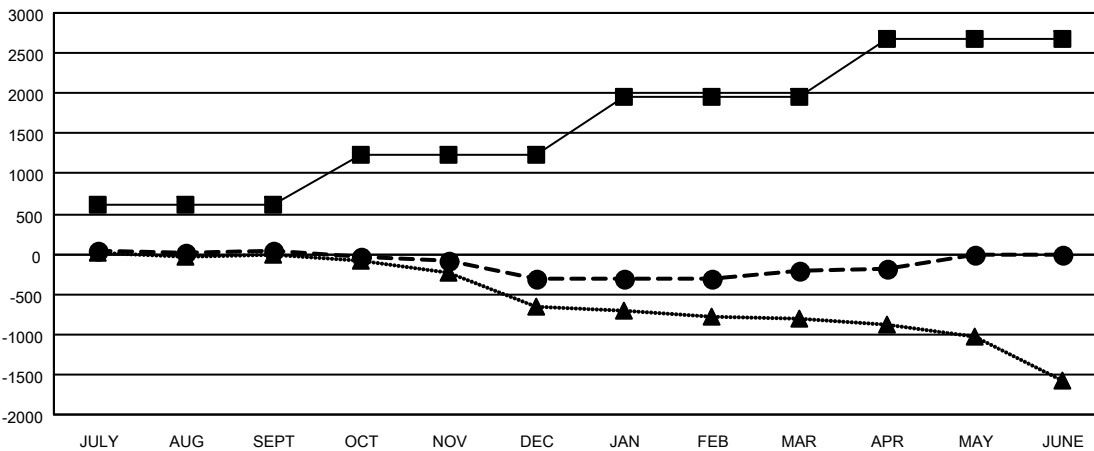
Members			
RESULTS FOR 2022-2023			
QUARTER	MEMBER GROWTH NET GOAL	MEMBER GROWTH ACTUAL	DROPPED MEMBERS ACTUAL (including transfers)
JULY/AUG/SEPT	618	794	634
OCT/NOV/DEC	612	603	848
JAN/FEB/MAR	732	902	705
APR/MAY/JUNE	713	248	183

GOALS AND ACTUAL NEW CLUBS CUMULATIVE



- CURRENT YEAR GOALS FOR NEW CLUBS
- CURRENT YEAR ACTUAL NEW CLUBS
- ▲- LAST YEAR ACTUAL NEW CLUBS

GOALS AND ACTUAL MEMBERS CUMULATIVE



- MEMBER GROWTH NET GOAL
- MEMBER GROWTH ACTUAL
- ▲- LAST YEAR MEMBERSHIP ACTUAL

DROPPED CLUBS: 14	
DROPPED MEMBERS	
DECEASED	315
CLUB CANCELLED	6
OTHER	2,049
TOTAL	2,370

702 CLUBS OF 1171 ADDED 1 OR MORE NEW MEMBERS

[CLICK HERE FOR CUMULATIVE MEMBERSHIP DATA](#)

GENDER DISTRIBUTION	
MALE	14,124 (62.69%)
FEMALE	8,396 (37.27%)
NON BINARY	6 (0.03%)
PREFER NOT TO ANSWER	4 (0.02%)
TOTAL FAMILY UNIT MEMBERS	3,414
FAMILY MEMBERS PAYING HALF DUES	1,733